

© This Drawing is the copyright of benjamin + beauchamp architects ltd.  
 All dimensions to be checked on site by contractor and not scaled from this drawing.  
 benjamin + beauchamp architects ltd accept no liability for any expense, loss or damage of whatsoever nature and however arising, from any variation made to this drawing or in the execution of the work to which it relates, which has not been referred to them and their approval obtained.  
 p:\lydiard millcent - all saints - 0771\drawings, photos & graphics\02 drawings\drawing board\0771-wd.021 - proposed servery and wc floor plan.dwg

**SERVERY CABINETS**

**CONSTRUCTION NOTES**  
 Finish - 22mm T&G Oak boarding with 40mm Oak work surface boarding.

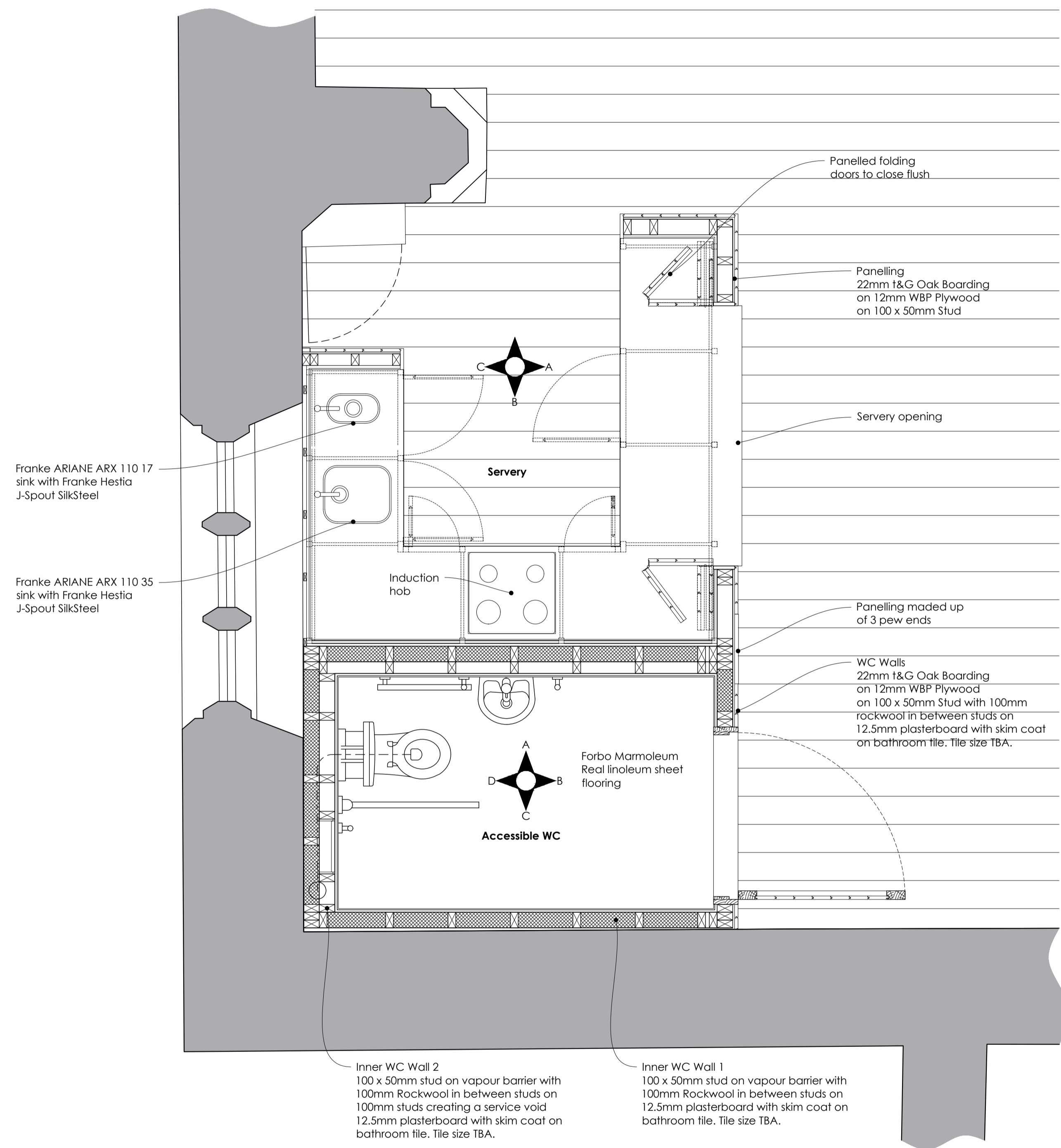
**Servery Cabinets**  
 Cabinet carcass - 18mm Birch Faced Plywood  
 Cabinet Partitions - 18mm Melamine Faced Plywood  
 Drawer Boxes - 15mm Melamine Faced Plywood  
 Cabinet Lower Base - 22mm WBP Plywood

**Sink**  
 Franke, ARIANE ARX 110 35  
 Franke, ARIANE ARX 110 17

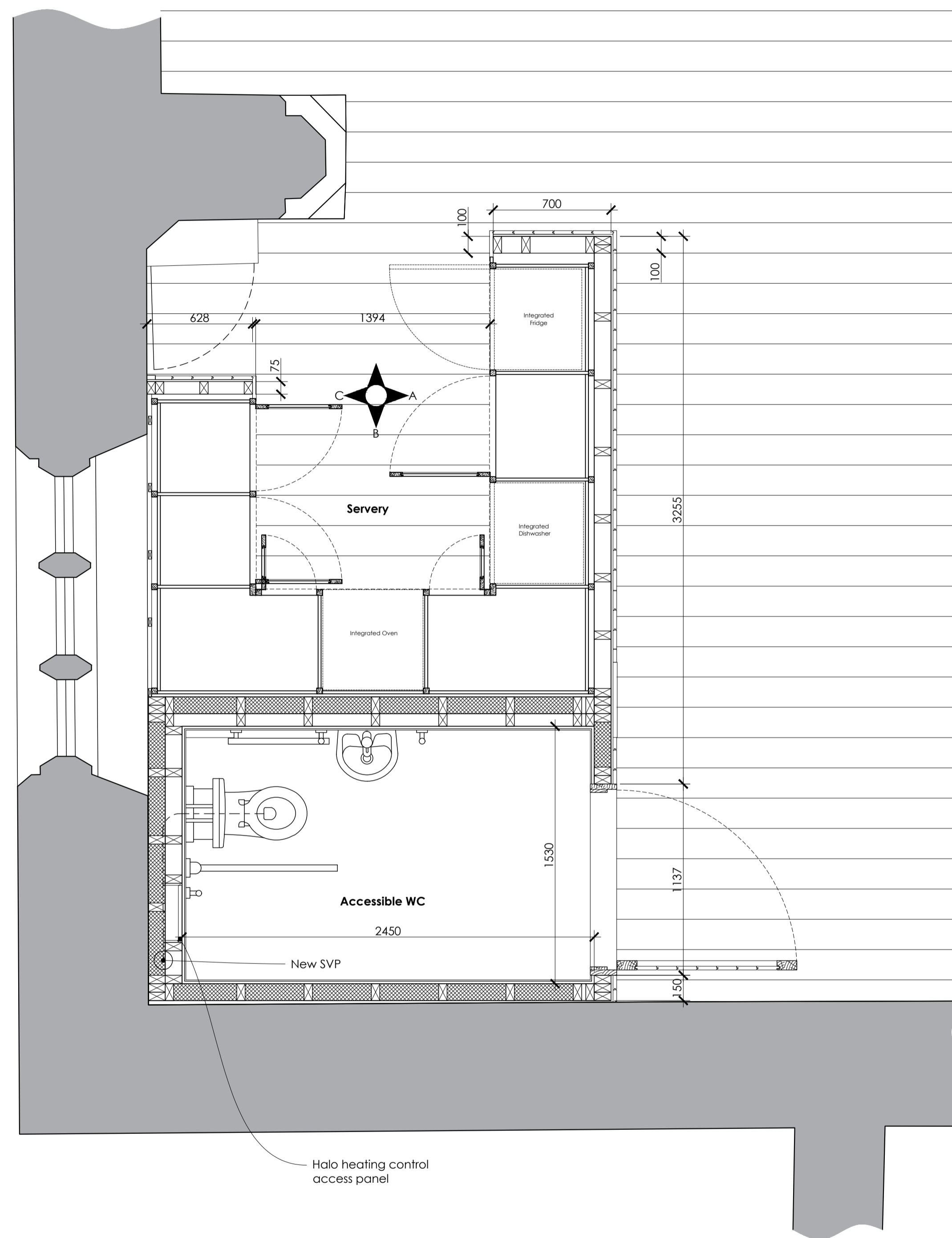
**Tapes**  
 Franke, Hestia J-Spout SilkSteel

**White Goods**  
 Integrated Fridge  
 Integrated Dishwasher  
 Oven  
 Induction Hob

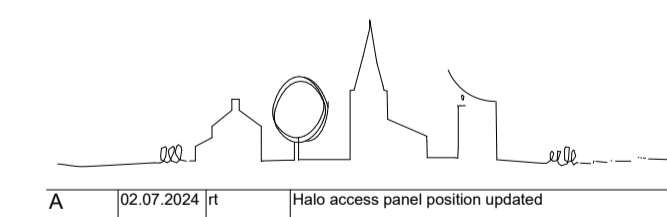
**Kitchen Plinth Heating**  
 Dimplex kick space heater



Proposed Floor Plan



Proposed Section Through Servery



LYDIARD MILLICENT  
 All Saints

Proposed Servery and  
 WC Floor Plans

FACULTY

benjamin + beauchamp  
 architecture design conservation  
 the borough studios, the borough,  
 wedmore, somerset BS28 4EB  
 T 01934 713313 F 01934 713314

Drawn by: JLB Date: 01/07/24 Scale: 1:20 of A1

Drawing No: 0771.WD.021 rev A

http://www.benjamin-beauchamp.com www.b2a-arch.com